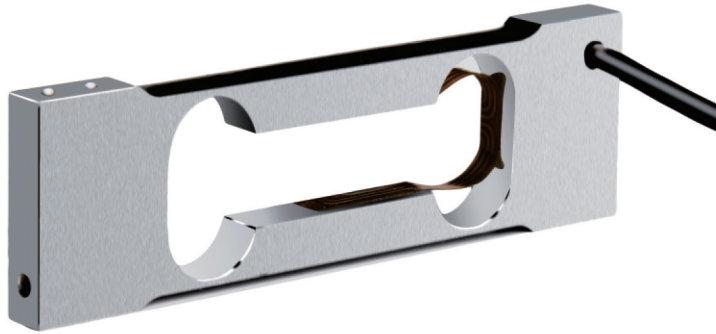


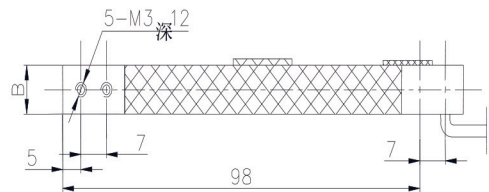
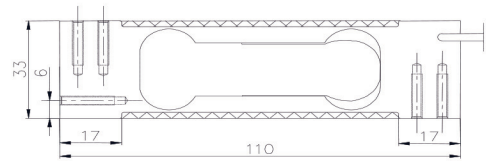
T706



◆ 特点与用途/Features & Applications

- 铝合金材料
 - 精度高、抗偏载能力强
 - 容易安装, IP65
 - 适用于电子秤、计数秤、电子天平及工业称重系统
- Made of aluminum alloy.
 - High accuracy, high side load tolerance
 - Easy to install, IP65 protection
 - Mainly used for electronic scales, electronic balance, price computing scales and industrial weighing systems

◆ 安装尺寸/Mounting Dimension

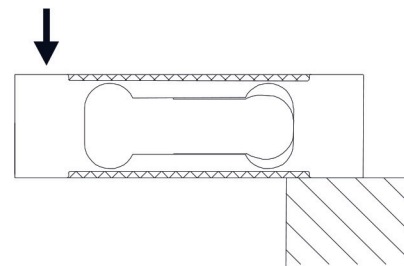


Capacity	B
200g	6
300,600g; 1, 1.5, 3 kg	10

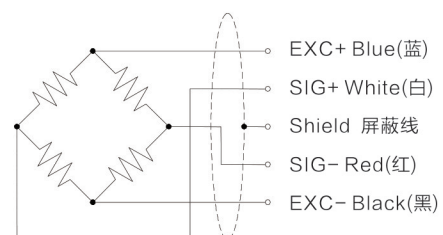
◆ 参数 Specifications 技术指标/Technique

参数	Specifications	技术指标/Technique
额定容量	Capacity	200,300,600g; 1, 1.5, 3 kg
精度等级	Accuracy class	C3
输出灵敏度	Sensitivity	0.8~1.0mV/V
零点输出	Zero balance	±0.05 mV/V
非线性	Non-linearity	0.015%F.S.
滞后	Hysteresis	0.015%F.S.
重复性	Repeatability	0.015%F.S.
蠕变 (30min)	Creep(30min)	0.0166%F.S.
温度灵敏度漂移	Temp.effect on output	0.02%F.S./10°C
零点温度漂移	Temp.effect on zero	0.03%F.S./10°C
输入电阻	Input impedance	405 ± 5 Ω
输出电阻	Output impedance	350 ± 3 Ω
绝缘电阻	Insulation	≥ 5000M Ω/100VDC
激励电压	Recommended excitation	5~15V
最大激励电压	Maximum excitation Voltage	20V
温度补偿范围	Compensated temp range	-10~40°C
工作温度范围	Operating temperature range	-10~50°C
安全载荷	Safe load limit	150%F.S.
破坏负载	Breaking load	300%F.S.
电缆线尺寸	Cable size	Φ4 × 350mm
单件重量	Weight approx.	0.1kg
材料	Material	aluminum alloy
防护等级	IP Class	IP65
最大秤盘尺寸	Max.platform size	100mm × 100mm

◆ 受力方式/Load Direction



◆ 配线图/Wiring Code



新产品

压向传感器

拉压向传感器

压电力传感器

多维力传感器

称重传感器

张力传感器

螺线力

扭矩传感器

其它定制力传感器

称重模块

仪表模块放大器