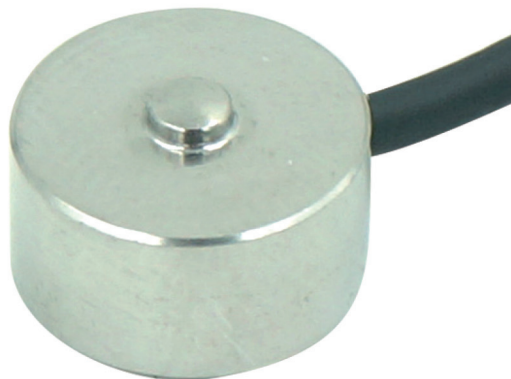
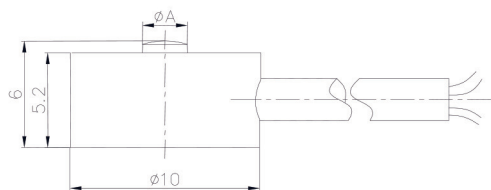




## T103



### ◆ 安装尺寸/Mounting Dimension



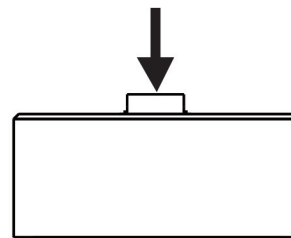
Capacity ( N )	A	Material	Weight Approx.
50,100,200,300	1.6	不锈钢/Stainless steel	0.1kg
500,1000	2.3	不锈钢/Stainless steel	0.1kg

### ◆ 特点与用途/Features & Applications

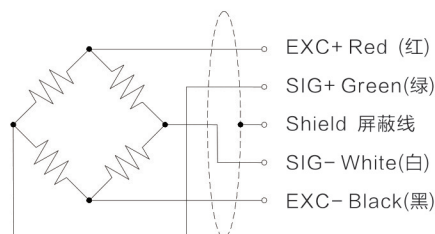
- 高度低，变形量小，外形尺寸小
- 不锈钢材料、防护等级：IP67，可定制
- 可定制高温性能，用于注塑、挤压等制造工艺
- 汽车压装、自动化组装、3C产品测试、新能源产品组装、医疗检测、机器人领域，模具组装及其他工业测试、测量及控制系统
- 动态响应频率高

- Low profile, small deflection and mini dimension
- Made of stainless steel IP67 protection, Customizable
- High temperature is customizable for injection molding, extrusion and other manufacturing process
- Suitable for Automotive press fit, automated assembly, 3C products testing, new energy product assembly, medical testing, robotics, mold assembly and other industrial testing and control system
- High dynamic response frequency

### ◆ 受力方式/Load Direction



### ◆ 配线图/Wiring Code



### ◆ 参数 Specifications 技术指标/Technique

参数	Specifications	技术指标/Technique
额定容量	Capacity	50,100,200,300,500,1000N
输出灵敏度	Sensitivity	1.0±20% $mV/V$
零点输出	Zero balance	±2%F.S.
非线性	Non-linearity	0.5%F.S.
滞后	Hysteresis	0.2%F.S.
重复性	Repeatability	0.2%F.S.
蠕变 (30min)	Creep(30min)	0.2%F.S.
温度灵敏度漂移	Temp.effect on output	0.05%F.S./10°C
零点温度漂移	Temp.effect on zero	0.05%F.S./10°C
输入电阻	Input impedance	800~1100 $\Omega$
输出电阻	Output impedance	800~1100 $\Omega$
绝缘电阻	Insulation	$\geq 5000M\Omega/100VDC$
激励电压	Recommended excitation	5~12V
最大激励电压	Maximum excitation Voltage	15V
温度补偿范围	Compensated temp range	-10~60°C
工作温度范围	Operating temperature range	-20~80°C
安全载荷	Safe load limit	150%F.S.
破坏负载	Breaking load	200%F.S.
电缆线尺寸	Cable size	$\phi 2 \times 4000mm$
防护等级	IP Class	IP67

型号	负载变形量	固有频率	重量
T103-50N	0.014mm	88kHz	28g
T103-100N	0.014mm	81kHz	28g
T103-200N	0.014mm	80kHz	28g
T103-500N	0.014mm	84kHz	28g
T103-1000N	0.014mm	95kHz	28g

新产品

压向传感器

拉压向传感器

压电力传感器

多维力传感器

称重传感器

张力传感器

螺纹力

扭矩传感器

其它定制力传感器

称重模块

仪表模块放大器