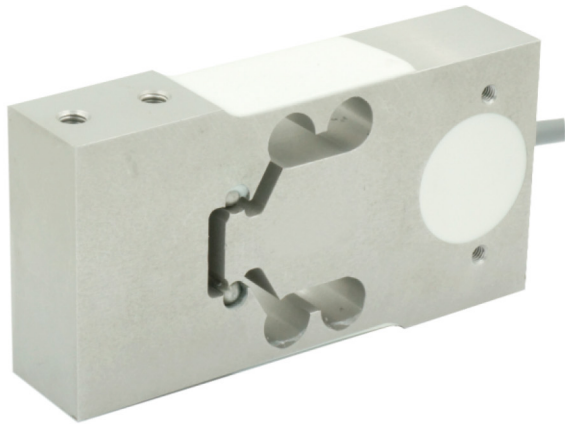
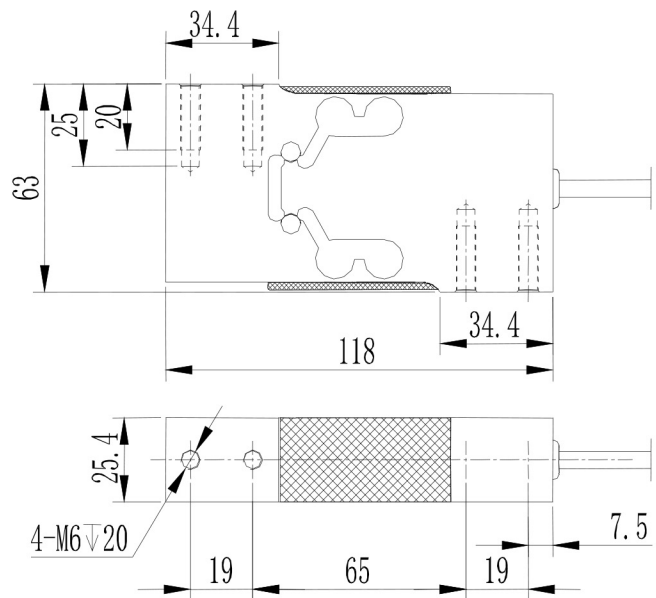


## T723



### ◆ 安装尺寸/Mounting Dimension



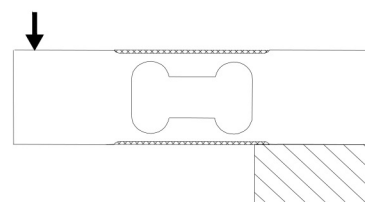
### ◆ 特点与用途/Features & Applications

- 铝合金材料
  - 精度高、抗偏载能力强
  - 容易安装, IP66
  - 适用于电子秤、计数秤、电子天平及工业称重系统
- Made of aluminum alloy.
  - High accuracy, high side load tolerance
  - Easy to install, IP67 protection
  - Mainly used for electronic scales, electronic balance, price computing scales and industrial weighing systems

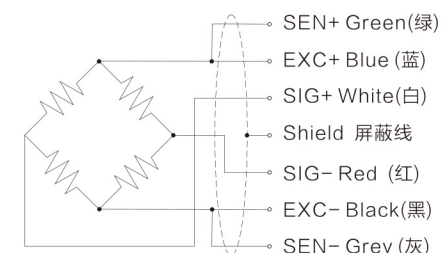
### ◆ 参数 Specifications 技术指标/Technique

参数	Specifications	技术指标/Technique
额定容量	Capacity	6,10,20,30kg
精度等级	Accuracy class	C3
输出灵敏度	Rated output	2.0 ± 10% mV/V
零点输出	Zero balance	± 2% F.S.
非线性	Non-linearity	0.0166% F.S.
滞后	Hysteresis	0.0166% F.S.
重复性	Repeatability	0.02% F.S.
蠕变 (30min)	Creep(30min)	0.017% F.S.
温度灵敏度漂移	Temp.effect on output	0.017% F.S./10°C
零点温度漂移	Temp.effect on zero	0.02% F.S./10°C
输入电阻	Input impedance	420 ± 20 Ω
输出电阻	Output impedance	350 ± 10 Ω
绝缘电阻	Insulation	≥ 5000MΩ/100VDC
激励电压	Recommended excitation	5-15V
最大激励电压	Maximum excitation	20V
温度补偿范围	Compensated temp range	-10-40°C
工作温度范围	Operation temp range	-20-60°C
安全超载	Safe overload	150% F.S.
极限超载	Ultimate overload	300% F.S.
电缆线尺寸	Cable size	Φ 4.6 × 1500mm
单件重量	Weight approx.	0.6kg
材料	Material	aluminum alloy
防护等级	IP Class	IP66
最大秤盘尺寸	Max.platform size	600mm × 600mm

### ◆ 受力方式/Load Direction



### ◆ 配线图/ Wiring Code



新产品  
压向传感器  
拉压向传感器  
压电力传感器  
多维力传感器  
称重传感器  
张力传感器  
螺纹力  
扭矩传感器  
其它定制力传感器  
称重模块  
仪表模块放大器