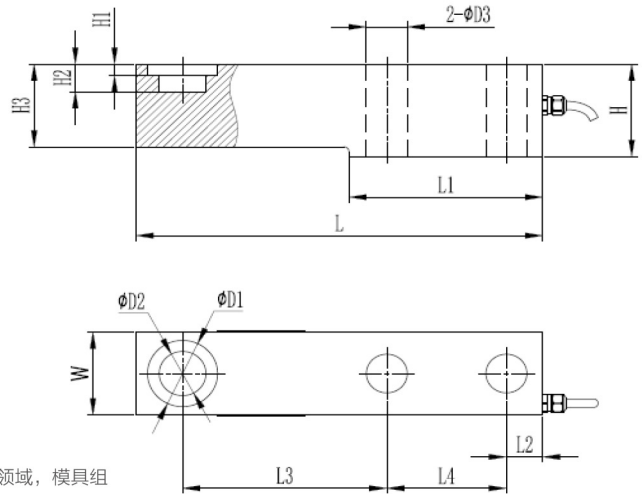


F223



◆ 安装尺寸/Mounting Dimension



◆ 特点与用途/Features & Applications

- 高度低，变形量小，外形尺寸小，量程大
- 不锈钢材料
- 防护等级：IP65，可定制
- 汽车压装、自动化组装、3C产品测试、新能源产品组装、医疗检测、机器人领域，模具组装及其他工业测试、测量及控制系统
- 动态响应频率高

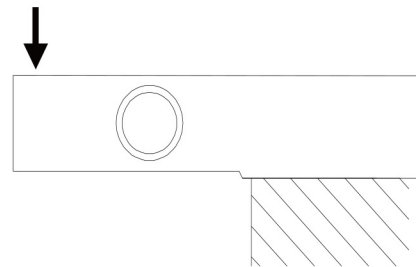
- Low profile, small deflection and mini dimension and big capacity
- Made of stainless steel
- IP65 protection, customizable
- Suitable for Automotive press fit, automated assembly, 3C products testing, new energy product assembly, medical testing, robotics, mold assembly and other industrial testing and control system
- High dynamic response frequency

Capacity	D1	D2	D3	H	H1	H2	H3	L	L1	L2	L3	L4	W
5t	38	22.2	20	52	12.3	30	47.6	235	125	23	124	66	47.7
10t	48	32	28	67	8.5	20	60	279	133	25	140	82	60
15t	54	38	34	82.5	9.5	24	70	318	153	32	159	89	70

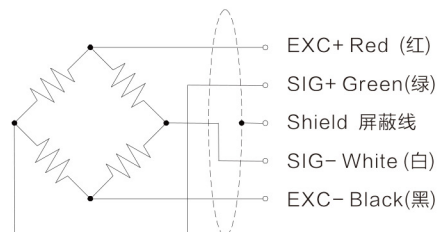
◆ 参数 Specifications 技术指标/Technique

额定容量	Capacity	5,10,15t
输出灵敏度	Rated output	2.0 ± 0.002mV/V
零点输出	Zero balance	± 0.05 mV/V
非线性	Non-linearity	0.02%F.S.
滞后	Hysteresis	0.02%F.S.
重复性	Repeatability	0.01%F.S.
蠕变 (30min)	Creep(30min)	0.02%F.S.
温度灵敏度漂移	Temp.effect on output	0.002%F.S./10°C
零点温度漂移	Temp.effect on zero	0.002%F.S./10°C
输入电阻	Input impedance	380 ± 20 Ω
输出电阻	Output impedance	350 ± 10 Ω
绝缘电阻	Insulation	≥ 5000MΩ/100VDC
激励电压	Recommended excitation	5~15V
最大激励电压	Maximum excitation	20V
温度补偿范围	Compensated temp range	-10~40°C
工作温度范围	Operation temp range	-20~65°C
安全超载	Safe overload	150%F.S.
极限超载	Ultimate overload	200%F.S.
电缆线尺寸	Cable size	Φ5 × 4000mm
防护等级	IP Class	IP66

◆ 受力方式/Load Direction



◆ 配线图/Wiring Code



新产品

压向传感器

拉压向传感器

压电力传感器

多维力传感器

称重传感器

张力传感器

螺紋力

扭矩传感器

其它定制力传感器

称重模块

仪表模块放大器